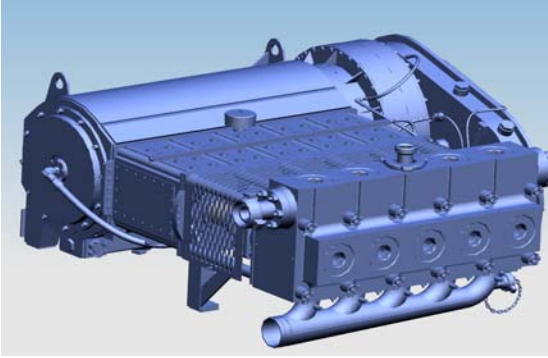


Q40 QUINTUPLEX PLUNGER PUMP

Specifications:



Pump Model	Q40
Configuration	Horizontal Quintuplex Plunger
Stroke Length	10 inches
Pump Weight	19000 lbs *
Horsepower Rating	2500 BHP
Continuous Speed	180 RPM
Minimum Speed	30 RPM
Mechanical Efficiency	93%

Standard Fluid End Materials Available:
Carbon Steel
Duplex Stainless Steel
316 Stainless Steel
Other materials on request

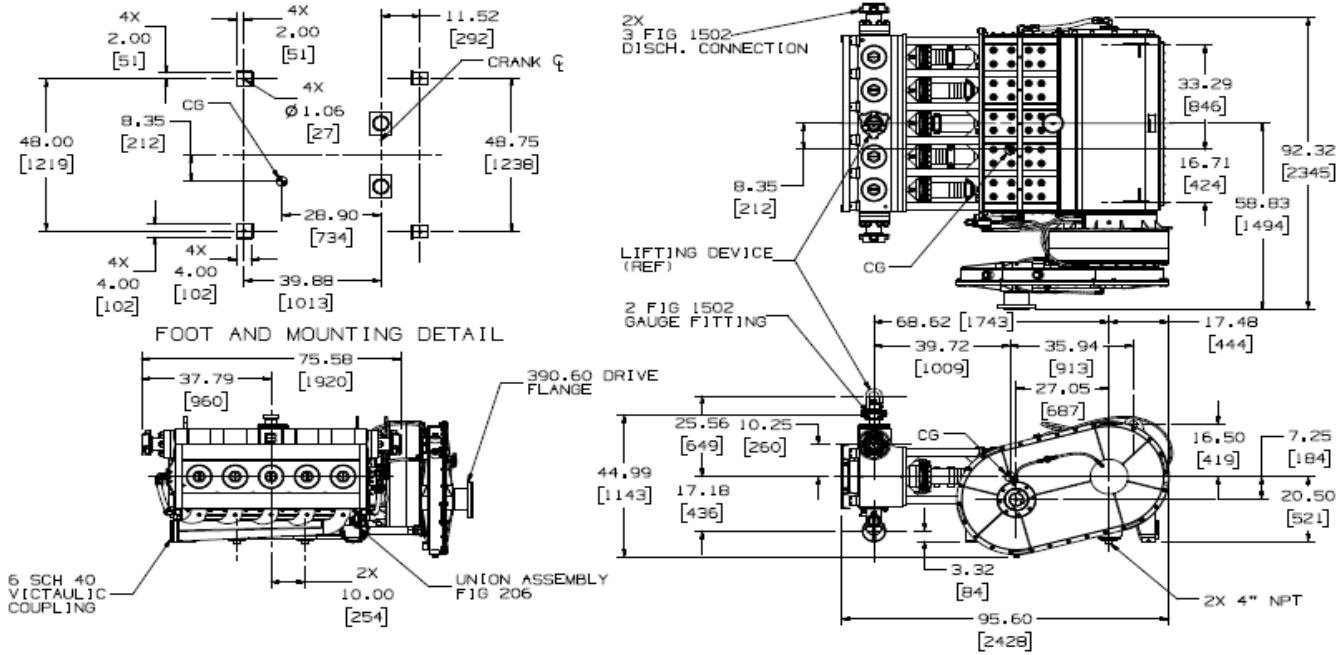
Suction and Discharge Connections:
Per Application and Specifications

Power End Gear Ratios:
6.95:1 with planetary and offset input gearbox
6.39:1 with planetary only
Direct drive at crankshaft
For other ratios consult FMC

Lubrication Requirements - Power End	
System Type	Dry sump with a customer lubricant, normal conditions
Inlet Connection	1 ea - 2" SAE Code 61 4-bolt flg
Drains - Power End	2 ea - 4" FNPT
Drains - Gearbox	2 ea - 2" FNPT
Lube tank capacity	100 gal
Lube tank equipment	vented, w/ return line strainer
Lube pump flow rate	70 gpm
flow rate at minimum speed	65 gpm
Relief valve setting	120 psi
Filtration	20 micron
Lube pressure	100 psi
Lube pressure, minimum	80 psi
Lube temperature, maximum	140 degF
Heat rejection rate	7% of BHP
Lubrication Requirements - Packing	
Lube Type	Grease or Oil
Oil Pressure	30-35 psi
Max Oil Pressure	60 psi

*Actual final weight is dependant on fluid end size and configuration

Pump Model	Plunger dia (IN)	Volume Gal/Rev	Fluid Cyinder	Maximum	Pump Capacity (GPM) @ Input Speed (RPM)				
					100	125	150	165	180
Q4032	4.0	2.7200	A	8000	272	340	408	449	490
Q4036	4.5	3.4425	A	6000	344	430	516	568	620
Q4040	5.0	4.2500	B	5080	425	531	638	701	765
Q4044	5.5	5.1425	B	4200	514	643	771	849	926
Q4048	6.0	6.1200	C	3540	612	765	918	1010	1102
Q4052	6.5	7.1825	C	3010	718	898	1077	1185	1293



FMC Technologies

Headquarters:

500 N. Sam Houston Parkway W.
 Suite 100
 Houston, Texas 77067
 Phone: 281-260-2121
 Fax : 281-260-2122

Manufacturing:

2825 W. Washington Avenue
 Stephenville, Texas 76401
 Phone: 254-968-2181
 Fax: 254-965-8278
 Toll Free: 1-800-772-8582

www.fmctechnologies.com



